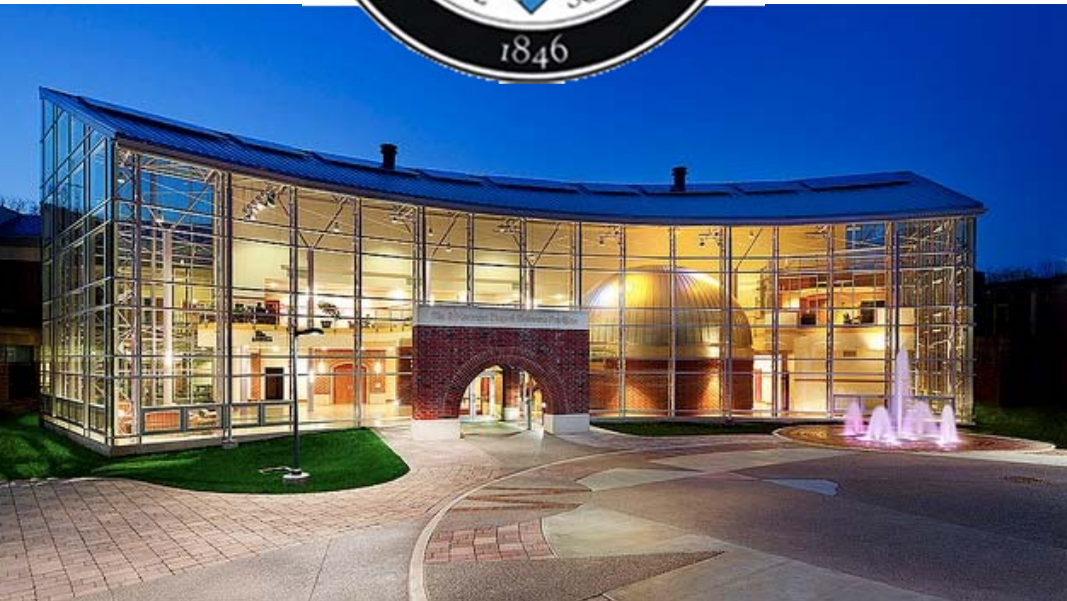
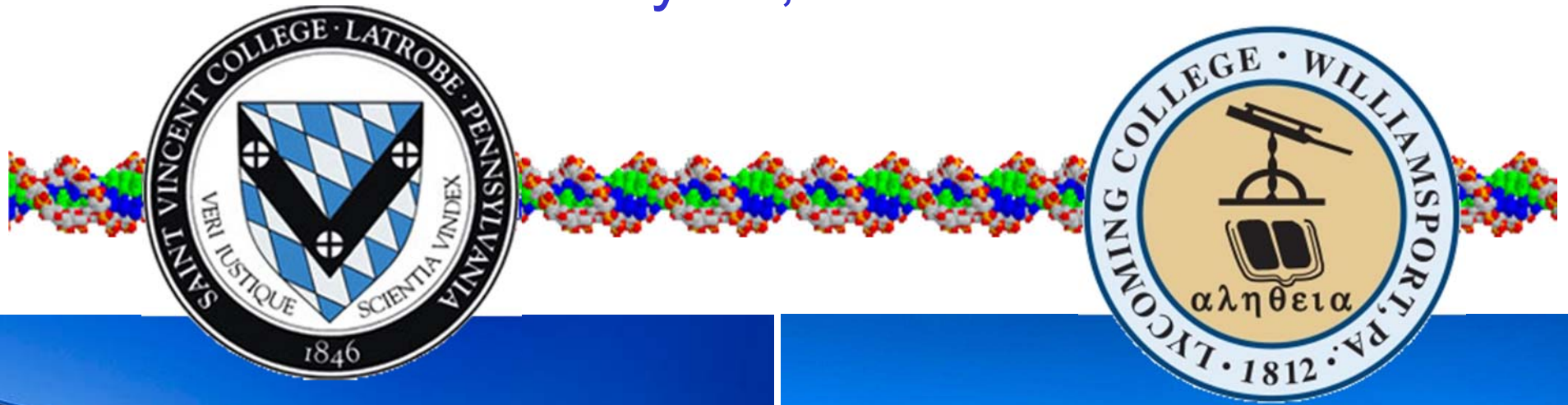


2013-2014 Allegheny Branch Activities

Jeff Newman – Lycoming College

Branch Officers Meeting

May 17, 2014





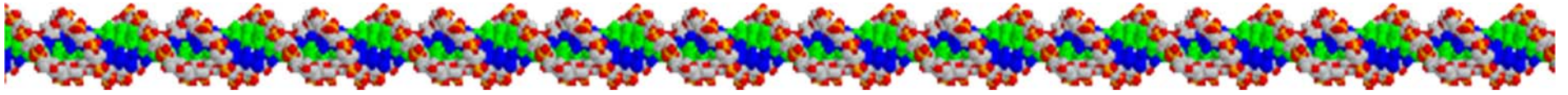
Annual Fall Meeting
November 1st and 2nd, 2013

hosted by

Saint Vincent College
Latrobe, PA

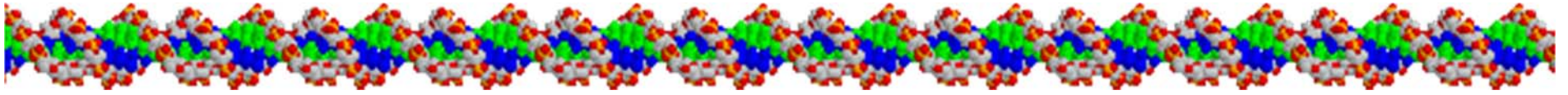
Organized by Jen Koehl – 109 participants

Co-sponsored by Powdermill Nature Reserve (PNR)



- PNR is the environmental research center of the Carnegie Museum of Natural History
- PNR sponsored (travel, hotel, honorarium) speaker Dr. James Kotcon, West Virginia University.
- Two presentations.
 - Friday 3:00 PM “***Organic Farming***”
 - Lecture open to public (no registration necessary)
 - Part of their mission to educate the public
 - Saturday 11:00 AM ***Pest Management using Biological Agents***

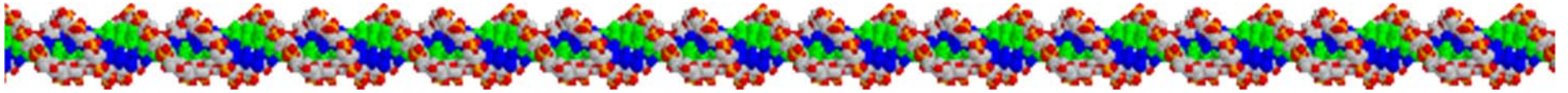
Co-sponsored by Powdermill Nature Reserve



- Meeting was advertised on PNR website
- Participation was included in their annual report
- ABASM provided 3 free registrations and Friday evening dinner tickets



Co-sponsored by Tri-Beta

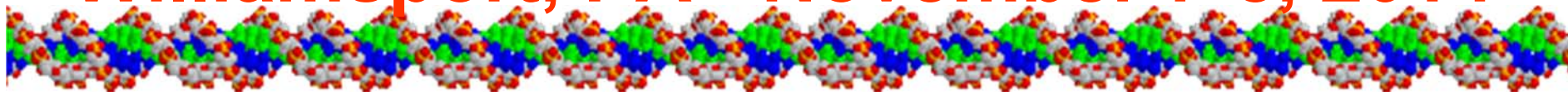


- Local chapter (Upsilon Gamma) of Beta Beta Beta Biology Honor Society sponsored dinner and registration for St. Vincent students to encourage attendance.
- Tri-Beta students organized student activities for Friday evening and Saturday Lunch

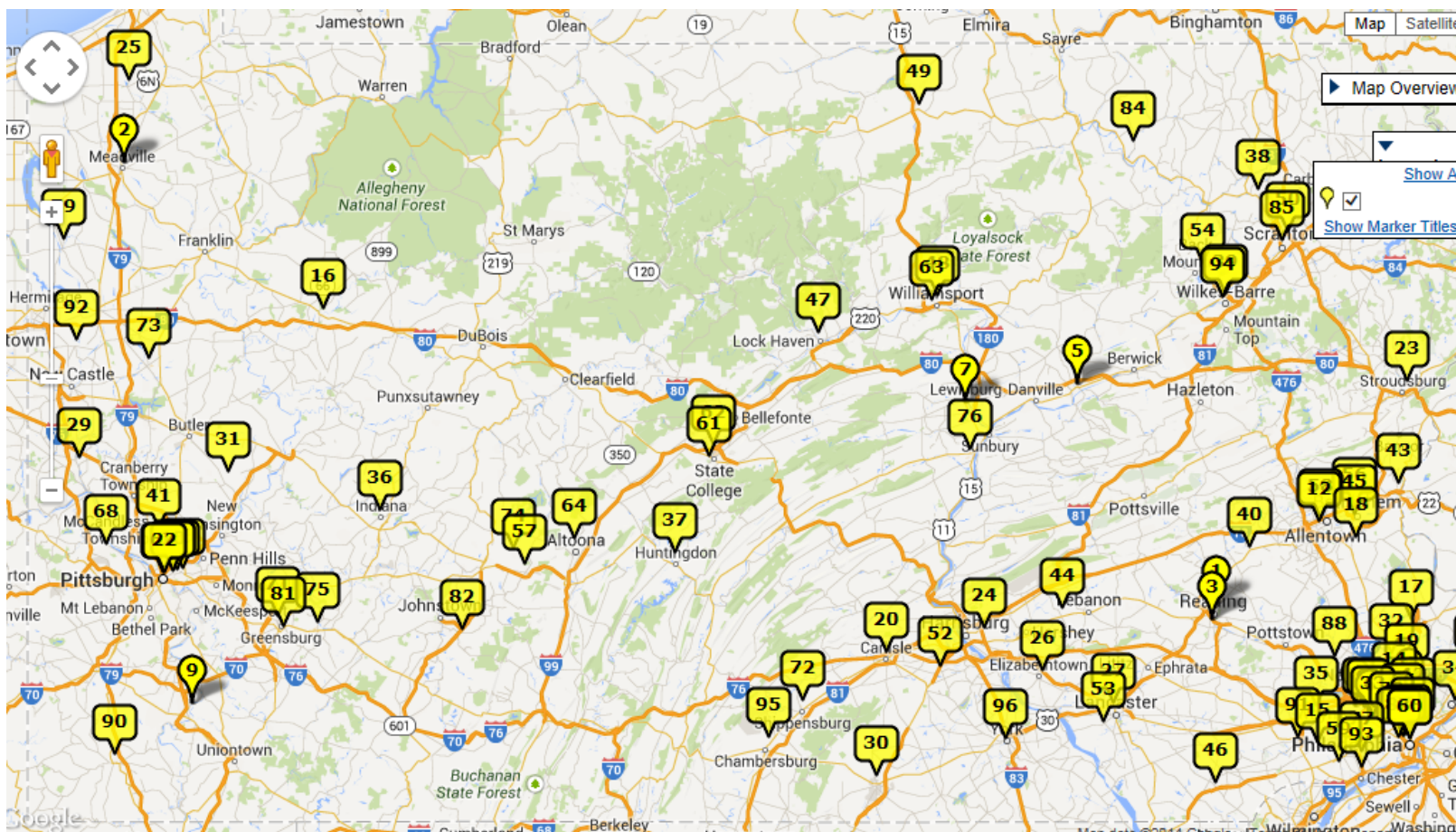


Lycoming College Meeting

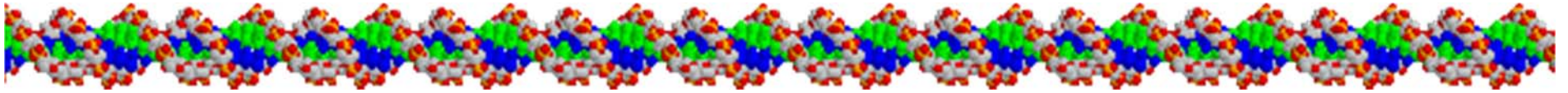
Williamsport, PA - November 7-8, 2014



- Williamsport PA, is at the eastern edge of the Allegheny branch area
- Allegheny branch tends to focus on undergraduate research
- We hope to co-sponsor, cross advertise with Eastern Branch.
- PUI's in Eastern PA Branch will specifically be invited.



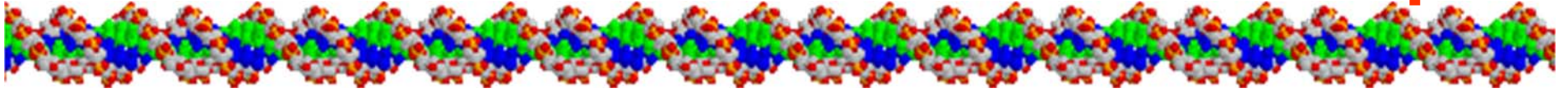
Co-sponsored by Tri-Beta



- Local chapter (Rho Gamma) of Beta Beta Beta Biology Honor Society will run registration area serve as facilitators/general assistants
- Tri-Beta students will organize student activities/run labs for educational activities Friday evening and career-focused activities during Saturday Lunch
- Hope to establish an ASM student chapter



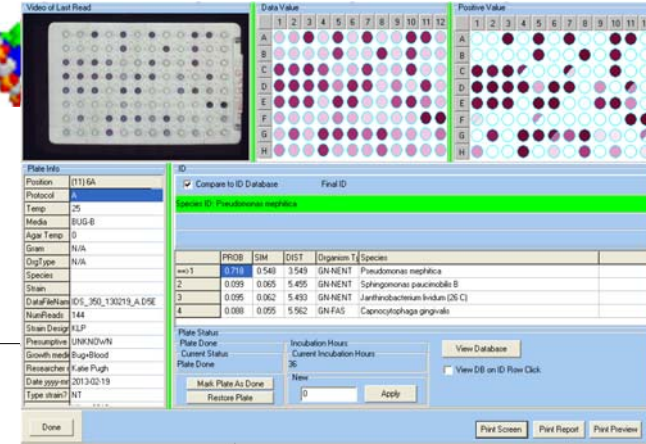
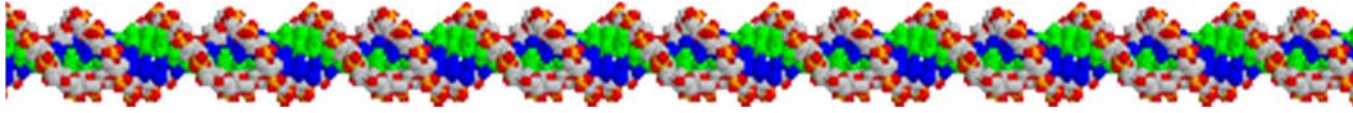
Friday Afternoon/Evening Educational Activities/Labs/Workshops



- In 2009 Lycoming was awarded an NSF MRI-R2 grant (Stimulus) for instruments to characterize novel microbes
 - Biolog Omnilog
 - MIDI-FAME
 - HPLC with diode array detector
- Lycoming is a member of GCAT-SEEK to bring NextGen sequencing to undergrad curriculum
 - Shared runs sequence isolates for <\$200



Friday Afternoon/Evening Educational Activities/Labs/Workshops



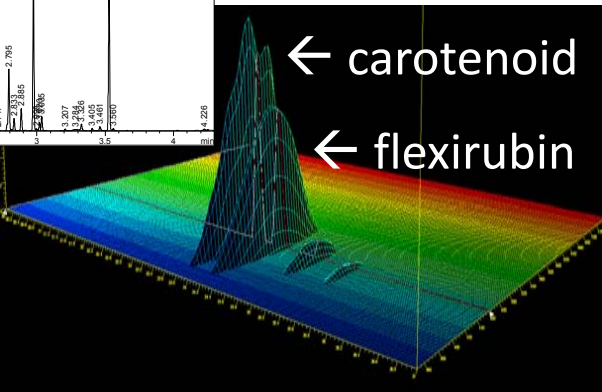
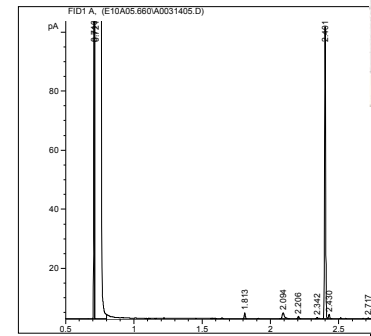
4 Hands-On Workshops available (twice)

- Biolog GenIII plates with participant sample (sponsored by Biolog!)

- MIDI-FAME with participant sample

- Pigment HPLC with participant

- Genome Analysis with RAST
 - drawing for participants to get a microbial genome sequenced (value ~\$175)



You chose to compute data for the following organisms:

Reference	<i>Chryseobacterium hispalense</i> DSM 25574 (491205.4)
Comparison Organism 1	<i>Chryseobacterium gleum</i> F93, ATCC 35910 (525257.7)
Comparison Organism 2	<i>Chryseobacterium</i> sp. CF314 (1144316.4) BlastDotPlot

Percent protein sequence identity

Bidirectional best hit 100 99.9 99.8 99.5 99 98 95 90 80 70 60 50 40

Unidirectional best hit 100 99.9 99.8 99.5 99 98 95 90 80 70 60 50 40

[exportable](#) [clear all filters](#)

display 30 items per page

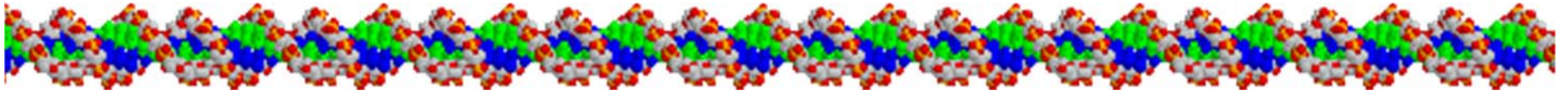
displaying 3028 - 3057 of 4006

percent identity	525257.7	1144316.4	
491205.4			
Contig	Gene	Contig	Gene
all	all	all	all
21	3028 360 bi 1 241 bi 22 1525		
21	3029 270 bi 1 240 uni 51 2272		
21	3030 680 bi 1 239 uni 2 181		
21	3031 92 bi 1 238 uni 14 1009		
21	3032 580 bi 1 237 uni 49 2655		
21	3033 298 bi 1 236 bi 2 183		
21	3034 293 bi 1 235 bi 2 184		
21	3035 249 bi 1 234 uni 1 1		
21	3036 440 bi 1 233 bi 2 185		
21	3037 1455 bi 1 232 bi 2 186		
21	3038 41 bi 1 231 -		
21	3039 208 bi 1 230 bi 69 3272		
21	3040 348 bi 1 229 uni 3 200		
21	3041 92 bi 1 228 uni 59 2913		
21	3042 258 bi 1 227 -		
21	3043 158 bi 1 226	fig525257.7.pep.224	
21	3044 110 bi 1 225	location: NZ_ACKO01000001.253632.254855	
21	3045 408 bi 1 224	length: 407	
21	3046 106 bi 1 223	identity: 1	
21	3047 392 bi 1 222	function: Tyrosine type site-specific recombinase	

rast.nmpdr.org/seedviewer.cgi?page=Annotation&features=fig525257.7.pep.224



Career Programming for Students



- During Saturday Lunch
- 10-15 min presentations followed by 30 min of questions for panel
 - Medical School Admissions
(TCMC Representative)
 - Clinical Lab Sciences
Williamsport Hospital CLS program director
 - Graduate School - TBA
 - Environmental Jobs
Lyco Alum Geoff Smith, PA Fish and Boat Commission